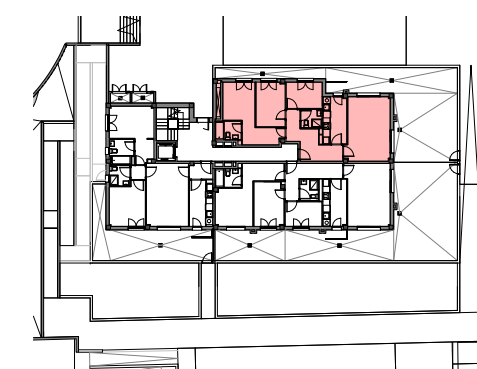
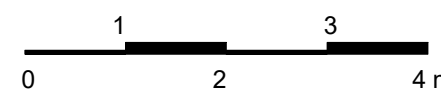


Sup Útil Interior 77.39 m²



Superficies **Esc G (PB) P.3**

Superficies Construidas Interiores

Sup Vivienda	90.66m ²
Sup Terrazas	66.22 m ²
Total Vivienda	156.88m²

Promueve **Comercializa**



1 V.P.Baja Escalera G P3
V.11-031 : 75